

A new species of the genus *Abacetus* DEJ.

(Coleoptera, Carabidae)

By Stefano L. STRANEO

Among some indeterminate Pterostichini sent for determination by Dr. M. BAEHR of the Zoologische Staatssammlung München, I found a new interesting species of the genus *Abacetus*, here described.

Abacetus semibrunneus sp. n.

Type material: Kamerun Buea (4 and 10-2-1980, leg. SCHLEGEL) 6 specimens (4 ♂ and 2 ♀) of which 1 ♂ holotype (Staatl. Museum f. Naturkunde, Stuttgart), 1 ♀ allotype (coll. STRANEO), and 4 Paratypes (Zool. Staatssammlung München, coll. STRANEO and Coll. BAEHR).

Length 4,6 mm; width 1,7 mm. Head and pronotum black, moderately shiny; elytra and lateral border of pronotum brown, little shiny; mouth parts, antennae, legs and hind trochanters flavo-ferruginous. Head moderate, smooth; eyes rather wide, convex; frontal impressions deep, very narrow, short, strongly divergent towards anterior supraorbital setigerous pore. Pronotum subrectangular, moderately convex; anterior margin truncate, anterior angles obtuse, rounded, not protruding; sides anteriorly arcuate (maximum width shortly before middle length), nearly straight towards basal angles, which are moderately convex, with vertex not blunt. Lateral border moderately wide, evidently crenulate, with two normal setae. Base not bordered on sides, with a rather elongate sulcus on each side, slightly divergent towards base. Median line narrow, deeply impressed; space between basal sulci and hind angles moderately convex, exceptionnally with a faint narrow elongate impression.

Elytra ovate, convex chiefly towards apex; length 2,5 mm; width 1,7 mm, fully striate. Sides gently arcuate, diverging towards $\frac{2}{3}$ length, where is the maximum width; thence obtusely rounded; preapical sinuosity null. Striae deep, impunctate; interstices convex, 3d one without the normal puncture. Umbilicate series widened, but not interrupted in middle.

Under surface wholly impunctate; prosternum with a deep longitudinal elongate impression; metasterna very short; angle of metasternum with a wide depression. Anal segment on each side with one seta in the ♂ and two in the ♀.

Legs little elongate, apical segment of all tarsi without setae on ventral surface.

Microsculpture of pronotum and elytra isodiametric, very thick. Aedeagus, very little chitinized (fig. 2). This new *Abacetus* belongs to the subgenus *Caricus* MOTSCH., *nanus*-group; the nearest species seems to be *A. nanus* CHAUD. and *A. subglobosus* CHAUD. From *A. nanus*, *A. semibrunneus* sp. n. differs by the colour, the shape of pronotum (which is less narrowed towards base); from *A. subglobosus* by the colour and the less stout shape; from both species by the lack of the normal puncture on the 3d interstice and the crenulation of the lateral border of pronotum and elytra, characters absolutely exceptional in the genus *Abacetus*. The apical blade of aedeagus is very different.

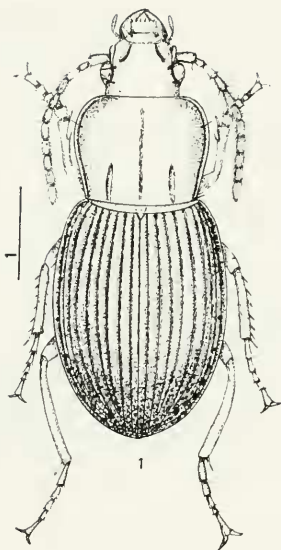


Fig. 1: *Abacetus semibrunneus* sp. n.

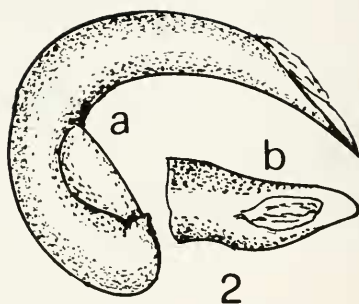


Fig. 2: *Abacetus semibrunneus* sp. n. – Aedeagus: a – lateral view; b – apical part, dorsal view.

Acknowledgements

I am very grateful to Dr. M. BAEHR for the loan of the specimens on which my description is based and for the duplicates kindly presented to my collection.

Zusammenfassung

Die neue Art *Abacetus (Caricus) semibrunneus* sp. n., ist nahe verwandte mit *A. nanus* CHAUD., unterscheidet sich von dieser durch verschiedene Färbung. Der Halsschild ist an der Basis weniger schmal, die dritten Zwischenräume sind ohne Punkte und die Aedeagi sind verschieden. *Abacetus subglobosus* CHAUD., eine andere nahe verwandte Art ist dicker und kürzer.

Address of author:
Stefano L. STRANEO
Viale Romagna 10
I-20133 Milano